

OPENING DOORS SINCE 1843

Loveitts^{est. 1843}
THE ESTATE AGENTS



Lutterworth Road
Nuneaton, CV11 6RA

£600,000



Lutterworth Road

Nuneaton, CV11 6RA

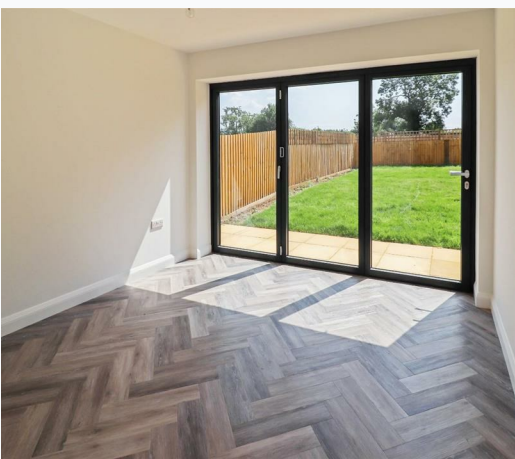
This newly appointed prestigious development of four luxury detached dwellings on the outskirts of Nuneaton boasts a feeling of Countryside living whilst being on the doorstep of the M69 for easy access to the M1, M6 and A5 corridors.

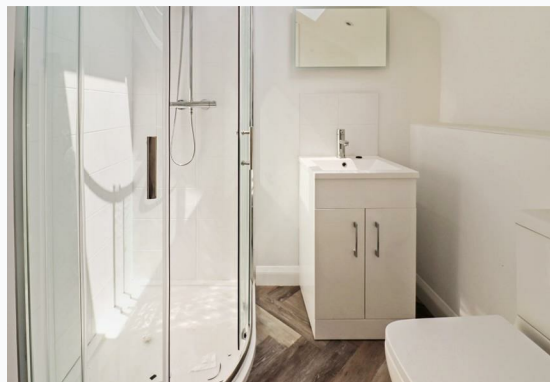
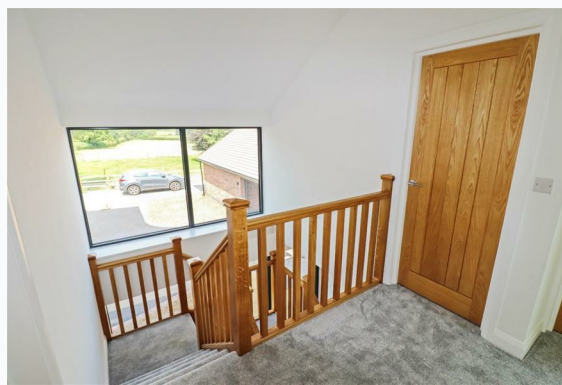
Plot 1 is a 4 Bedroom detached home with double garage, block paved driveway.

Cadena View comes with a high specification, expected of such a quality property, large gardens, ample parking and double garages built as standard.
To view please contact the New Homes Sales Team at Loveitts Estate Agents on 02476 258421

Please note photos are virtual dressing on top of existing real photo. For illustration purposes only.

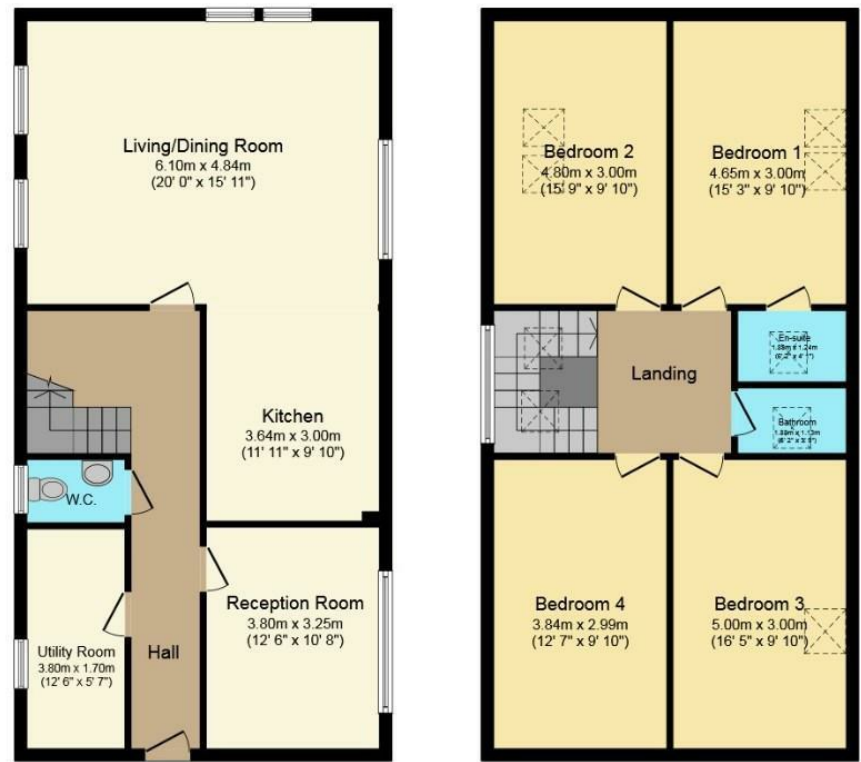
If you're looking to sell your property please contact us here for a FREE Market Appraisal <https://valuation.loveitts.co.uk/home/835-loveitts>





Floor Plan

Area Map



Ground Floor
Floor area 76.7 sq.m. (825 sq.ft.)
approx

First Floor
Floor area 76.7 sq.m. (825 sq.ft.)
approx

Total floor area 153.4 sq.m. (1,651 sq.ft.) approx

This Floor Plan is for illustration purposes only and may not be representative of the property. The position and size of doors, windows and other features are approximate. Unauthorized reproduction prohibited. © PropertyBOX



Energy Efficiency Rating

	Current	Potential
Very energy efficient - lower running costs		
(92 plus) A		
(81-91) B		
(69-80) C		
(55-68) D		
(39-54) E		
(21-38) F		
(1-20) G		
Not energy efficient - higher running costs		
England & Wales		EU Directive 2002/91/EC

These particulars, whilst believed to be accurate are set out as a general outline only for guidance and do not constitute any part of an offer or contract. Intending purchasers should not rely on them as statements of representation of fact, but must satisfy themselves by inspection or otherwise as to their accuracy. No person in this firm's employment has the authority to make or give any representation or warranty in respect of the property.